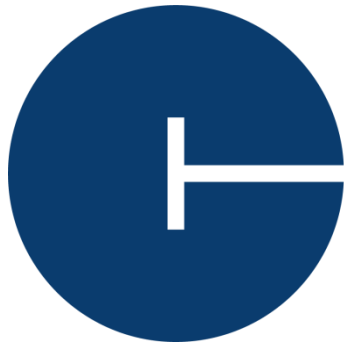


# Leader

# UPS





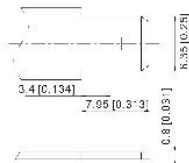
# Leader



Vare nr.	Navn	Spænding	Kap C20	L x B x H (mm)	Vægt Kg	Stk. kolli	Terminal
460-8515	CT12-20W	12V	5,4Ah	90 x 70 x 107	1,8	10	T2
460-8530	CT12-33W	12V	8,6Ah	151 x 65 x 99	2,66	5	T2
460-8535	CT12-50W	12V	13,6Ah	151 x 98 x 101	4,05	4	T2
460-8544	CT12-80W	12V	21,2Ah	182 x 77 x 166	6,09	2	T12
460-8600	CT12-100W	12V	28,6Ah	166 x 175 x 125	8,6	1	T12
460-8608	CT12-90W	12V	27,0Ah	166 x 125 x 175	7,9	1	T12
460-8610	CT12-150W	12V	35,0Ah	195 x 130 x 167	10,2	1	T6
460-8615	CT12-125W	12V	41,2Ah	197 x 165 x 170	13,2	1	T6
460-8617	CT12-225W	12V	55,0Ah	229 x 138 x 203	17,3	1	T6
460-8618	CT12-220W	12V	70,8Ah	348 x 167 x 178	21,3	1	T6
460-8620	CT12-320W	12V	82,0Ah	259 x 168 x 211	23,8	1	T6
460-8630	CT12-370W	12V	95,0Ah	305 x 168 x 210	27,4	1	T6
460-8636	CT12-430W	12V	100,0Ah	330 x 173 x 217	31,2	1	T11
460-8640	CT12-480W	12V	129,4Ah	408 x 177 x 225	37,6	1	T11
460-8650	CT12-485W	12V	161,8Ah	483 x 170 x 239	43,5	1	T11
460-8655	CT12-540W	12V	155,0Ah	335 x 172 x 278	42,4	1	T11
460-8660	CT12-675W	12V	214,0Ah	522 x 240 x 224	62,6	1	T11

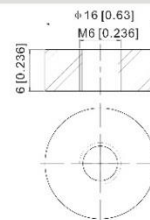
### T2 Terminal

FASTON TYPE (Copper) quick disconnect tabs; silver coating for better conductivity



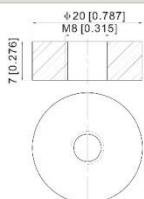
### T6 Terminal

Brass Coated With Tin; Threaded Insert 6mm STUD  
Torque: 3.9 ~ 5.4 N\*m (34.39 ~ 47.75 in\*lbs)



### T11 Terminal

Brass Coated With Tin; Threaded Insert 8mm STUD  
Torque: 11~14.7 N\*m (97.28 ~ 130.0 in\*lbs)



### T12 Terminal

Brass Coated With Tin; Threaded Insert 5mm STUD  
Torque: 2.0 ~ 3.0 N\*m (17.69 ~ 26.53 in\*lbs)

