

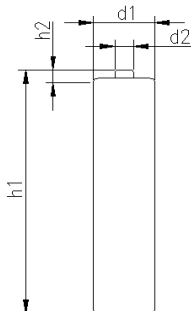
		Conditions	
cell type:		NiMH	
cell size:		AAA	
nominal voltage:	1.2	V	
max. charge voltage:	1.5	V	
		at standard charge (0.1C / 20°C)	
capacity			
nominal:	800	mAh	discharge at 0.2C
minimum:	800	mAh	discharge at 0.2C
	750	mAh	discharge at 1C
			1.0V end discharge voltage
			ta: 20°C
max. continuous discharge current:	2400	mA	ta: 0...45°C
charge		current	time
standard charge:	80	mA	14...16hrs
quick charge:	240	mA	4hrs
fast charge:	800	mA	1.1hrs
recommended charge termination control parameters:	0...5	mV	-ΔV (-delta V)
	0.8...1	°C	temperature rise per minute
	45...50	°C	TCO (temperature cut off)
trickle charge current:	8...25	mA	(recommended)
continuous overcharge: (less than 1 year)	≤ 80	mA	no conspicuous deformation no leakage
internal resistance: (impedance)	≤ 40	mΩ	at 1KHz battery fully charged
life expectancy:	≥ 500	cycles	acc. IEC standard
self discharge			
charge retention:	≥ 80	%	after 12 months storage at 20°C
initial capacity:	≥ 550	mAh	within 30 days after delivery discharge at 0.2C
ambient temperature range:	0...45	°C	standard charge
	10...40	°C	fast charge
	0...45	°C	discharge (≥1C)
	- 20...65	°C	discharge (<1C)
	- 20...50	°C	storage (≤3months)
	- 20...40	°C	storage (≤6months)
	- 20...30	°C	storage (≤24months)

QCT1: 20/750/45
QCT2: 30/700/50

mechanical specifications

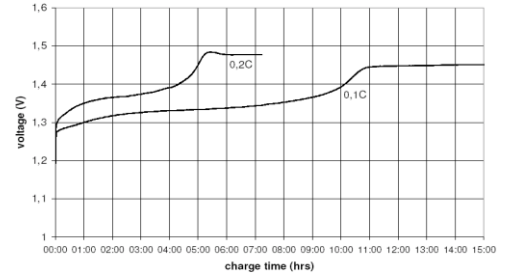
cell dimensions

diameter d1:		10.5 - 0.7	mm
diameter d2:	max.	3.8	mm
height h1:		44.5 - 1.5	mm
height h2:	min.	0.8	mm
weight:		12.5 ± 2	g

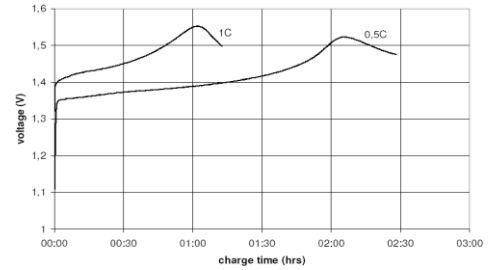


Diagrams

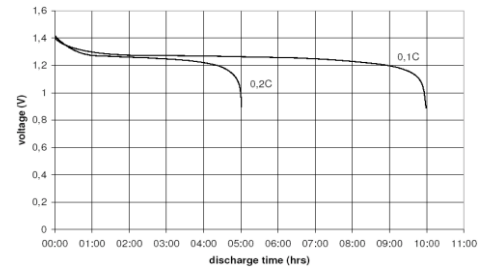
standard charge



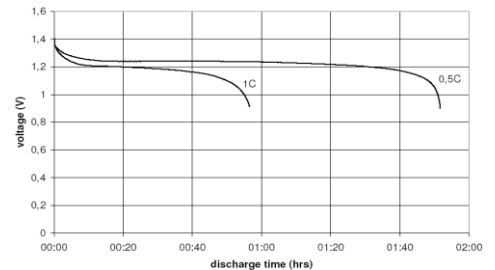
fast charge



low rate discharge



high rate discharge



ANSMANN Specifications for model:

data sheet no. / part no.

supplier no.

author / date

AAA - 800mAh low self discharge bulk package

5030981

702069

Gramlich / 06.02.2012