

Specification

Nominal Voltage	12V	
Nominal Capacity(20HR)	30.0AH	
Dimension	Length	195±2mm (7.68 inches)
	Width	130±2mm (5.12 inches)
	Container Height	164±2mm (6.46 inches)
	Total Height (with Terminal)	167±2mm (6.57 inches)
Approx Weight	Approx 10.7 kg (23.59lbs)	
Terminal	T6	
Container Material	ABS	
Rated Capacity	30.0 AH/1.50A	(20hr , 1.80V/cell, 25°C/77°F)
	27.6 AH/2.76A	(10hr, 1.80V/cell, 25°C/77°F)
	24.25 AH/4.85A	(5hr, 1.75V/cell, 25°C/77°F)
	21.36 AH/7.12A	(3hr, 1.75V/cell, 25°C/77°F)
	17.8 AH/17.8A	(1hr, 1.60V/cell, 25°C/77°F)
Max. Discharge Current	300A (5s)	
Internal Resistance	Approx 14.6mΩ	
Operating Temp. Range	Discharge	-20~55°C (-4~131°F)
	Charge	0~40°C (32~104°F)
	Storage	-20~50°C (-4~122°F)
Nominal Operating Temp. Range	25±3°C (77±5°F)	
Cycle Use	Initial Charging Current less than 6.0A.	
	Voltage 14.1V~14.4V (14.1V is optimum) at 25°C(77°F).	
Standby Use	No limit on Initial Charging Current .Voltage 13.5V~13.8V	
	(13.5V is optimum) at 25°C(77°F) . Coefficient -18mV/°C	
Capacity affected by Temperature	40°C (104°F)	103%
	25°C (77°F)	100%
	0°C (32°F)	86%
Self Discharge	GEL series batteries may be stored for up to 9 months	
	at 25°C(77°F) and then a freshening charge is required. For higher temperatures the time interval will be shorter.	



Typical Applications

- ◆ Railway and marine systems
- ◆ Electric tools
- ◆ Vehicle in place of walking
- ◆ Lawn mowers
- ◆ Golf trolleys and golfcart
- ◆ Electric toys
- ◆ Portable power
- ◆ Wheelchairs
- ◆ Medical equipments.



Constant Current Discharge (Amperes) at 25 °C (77°F)

F.V/Time	10min	15min	20min	30min	45min	1h	2h	3h	4h	5h	6h	8h	10h	20h
1.85V/cell	36.5	31.0	27.0	21.0	16.0	13.3	8.36	6.30	5.16	4.42	3.84	3.10	2.63	1.46
1.80V/cell	44.9	36.8	31.7	23.9	17.9	14.8	9.09	6.80	5.53	4.69	4.07	3.26	2.76	1.50
1.75V/cell	50.5	41.0	34.7	25.8	19.1	15.7	9.53	7.12	5.75	4.85	4.20	3.34	2.80	1.52
1.70V/cell	56.3	44.6	37.0	27.1	20.0	16.4	10.0	7.36	5.91	4.98	4.31	3.42	2.85	1.54
1.67V/cell	60.3	47.0	38.9	28.4	20.7	17.0	10.3	7.58	6.05	5.10	4.40	3.47	2.90	1.56
1.60V/cell	65.8	50.4	41.6	30.0	21.9	17.8	10.6	7.82	6.23	5.24	4.50	3.52	2.94	1.58

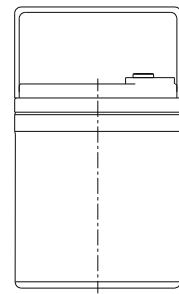
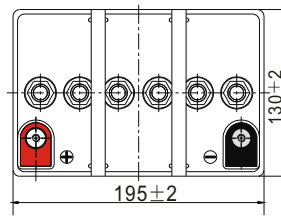
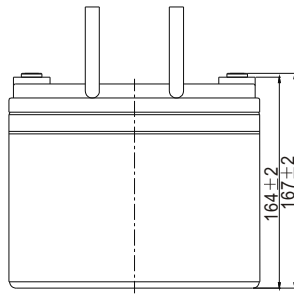
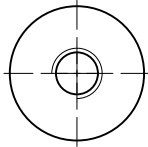
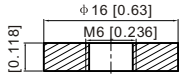
Constant Power Discharge (Watts) at 25 °C (77°F)

F.V/Time	10min	15min	20min	30min	45min	1h	2h	3h	4h	5h	6h	8h	10h	20h
1.85V/cell	68.6	58.6	51.6	40.3	30.9	25.9	16.3	12.3	10.1	8.70	7.58	6.14	5.22	2.92
1.80V/cell	83.1	68.6	59.6	45.5	34.4	28.7	17.6	13.2	10.8	9.21	8.02	6.46	5.48	2.99
1.75V/cell	92.0	75.5	64.6	48.8	36.5	30.2	18.4	13.8	11.2	9.49	8.26	6.61	5.56	3.03
1.70V/cell	101.1	81.3	68.4	51.0	38.0	31.4	19.3	14.3	11.5	9.73	8.47	6.75	5.65	3.07
1.67V/cell	107.1	84.8	71.3	52.9	39.2	32.3	19.7	14.6	11.7	9.95	8.61	6.84	5.73	3.10
1.60V/cell	114.8	89.7	75.5	55.5	41.1	33.7	20.3	15.0	12.0	10.2	8.79	6.92	5.81	3.13

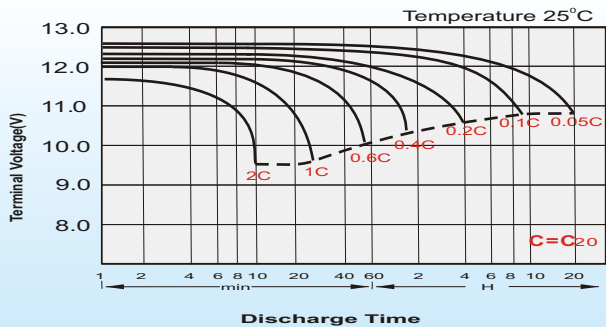
Dimensions

T6 Terminal

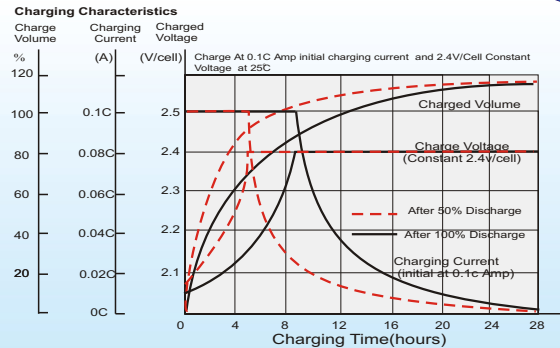
Unit: mm



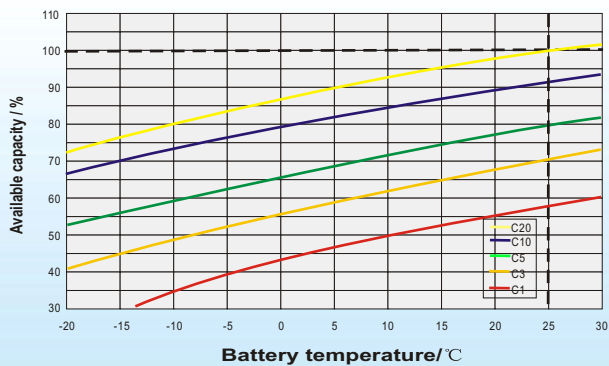
Discharge Characteristics



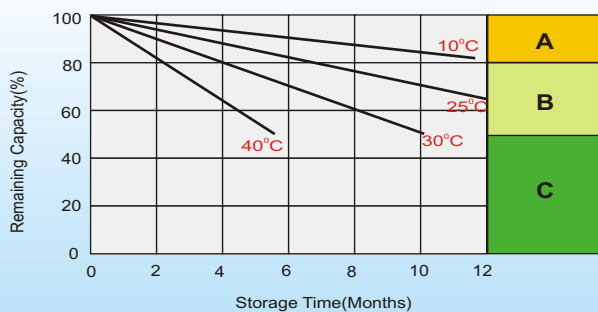
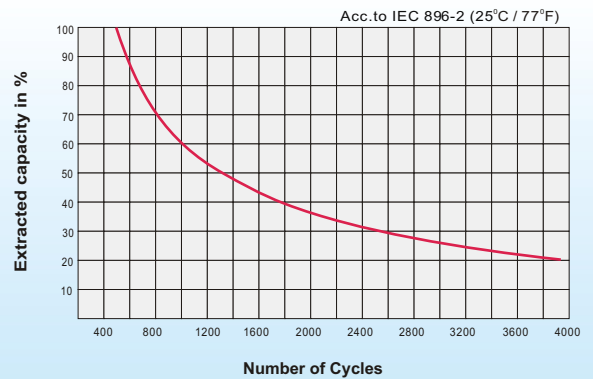
Charging Characteristics (cycle use)



Temperature Effects in Relation to Battery Capacity



Cycle Life in Relation to Depth of Discharge



Self Discharge Characteristics

- A** No supplementary charge required
(Carry out supplementary charge before use if 100% capacity is required.)
- B** Supplementary charge required before use. Optional charging way as below:
 1. Charged for above 3 days at limited current 0.25CA and constant volatge 2.25V/cell.
 2. Charged for above 20hours at limited current 0.25CA and constant volatge 2.45V/cell.
 3. Charged for 8-10hours at limited current 0.05CA .
- C** Supplementary charge may often fail to recover the capacity.
The battery should never be left standing till this is reached.

Sales Office

Sweden

Cell tech AB,
Äggelundavägen 2, 175 | 2 Järfälla , Sweden
TEL: +41 8 445 7870
FAX: +41 8 445 7878
E-mail: order@celltech.se
www.celltech.se

Finland and Baltic countries

Celltech oy
Höyläämötie 11A, 00380 Helsinki, Finland
TEL: +358 (0)207 9991 40
FAX: +358 (0)207 9991 41
E-mail: info@celltech.fi
www.celltech.fi

Denmark

Celltech A/S
Lejrvej 25 , 3500 Vaerloese Denmark
TEL: +45 7025 2201
FAX: +45 7025 2202
E-mail: info@celltech.dk
www.celltech.dk