

### Specification

Nominal Voltage	12V	
Nominal Capacity(20HR)	24.0AH	
Dimension	Length	166±2mm (6.54 inches)
	Width	175±2mm (6.89 inches)
	Container Height	125±2mm (4.92 inches)
	Total Height (with Terminal)	125±2mm (4.92 inches)
Approx Weight	Approx 8.70 kg (19.18lbs)	
Terminal	T12	
Container Material	ABS	
Rated Capacity	24.0 AH/1.20A	(20hr , 1.80V/cell, 25°C/77°F)
	22.1 AH/2.21A	(10hr, 1.80V/cell, 25°C/77°F)
	19.75 AH/3.95A	(5hr, 1.75V/cell, 25°C/77°F)
	17.28 AH/5.76A	(3hr, 1.75V/cell, 25°C/77°F)
	14.5 AH/14.5A	(1hr, 1.60V/cell, 25°C/77°F)
Max. Discharge Current	240A (5s)	
Internal Resistance	Approx 15.8mΩ	
Operating Temp. Range	Discharge	-20~55°C (-4~131°F)
	Charge	0~40°C (32~104°F)
	Storage	-20~50°C (-4~122°F)
Nominal Operating Temp. Range	25±3°C (77±5°F)	
Cycle Use	Initial Charging Current less than 12A.	
	Voltage 14.1V~14.4V (14.1V is optimum) at 25°C(77°F).	
Standby Use	No limit on Initial Charging Current .Voltage 13.5V~13.8V	
	(13.5V is optimum) at 25°C(77°F) . Coefficient -18mV/°C	
Capacity affected by Temperature	40°C (104°F)	103%
	25°C (77°F)	100%
	0°C (32°F)	86%
Self Discharge	GEL series batteries may be stored for up to 9 months at 25°C(77°F) and then a freshening charge is required. For higher temperatures the time interval will be shorter.	



### Typical Applications

- ◆ Railway and marine systems
- ◆ Electric tools
- ◆ Vehicle in place of walking
- ◆ Lawn mowers
- ◆ Golf trolleys and golfcart
- ◆ Electric toys
- ◆ Portable power
- ◆ Wheelchairs
- ◆ Medical equipments.



### Constant Current Discharge (Amperes) at 25 °C (77°F)

F.V/Time	10min	15min	20min	30min	45min	1h	2h	3h	4h	5h	6h	8h	10h	20h
1.85V/cell	28.1	23.6	21.2	17.0	13.1	10.9	6.81	5.16	4.25	3.64	3.15	2.51	2.13	1.17
1.80V/cell	33.3	27.6	24.2	19.0	14.4	11.9	7.33	5.52	4.52	3.83	3.30	2.61	2.26	1.20
1.75V/cell	38.3	31.0	27.0	20.6	15.5	12.7	7.70	5.76	4.68	3.95	3.40	2.69	2.35	1.22
1.70V/cell	43.3	34.3	29.2	22.0	16.4	13.3	8.06	5.95	4.81	4.06	3.50	2.75	2.39	1.24
1.67V/cell	46.5	36.3	30.8	23.0	17.0	13.6	8.30	6.13	4.93	4.14	3.56	2.79	2.42	1.25
1.60V/cell	50.7	39.1	32.9	24.4	18.0	13.8	8.57	6.32	5.08	4.25	3.64	2.85	2.46	1.26

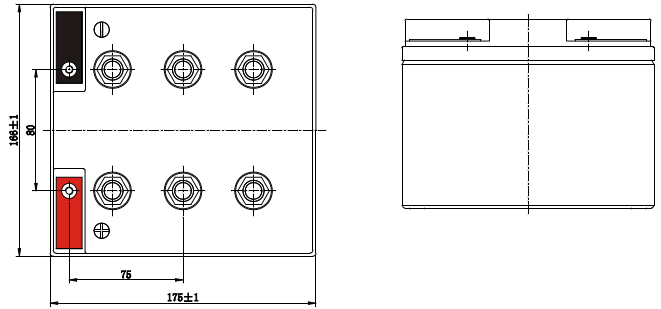
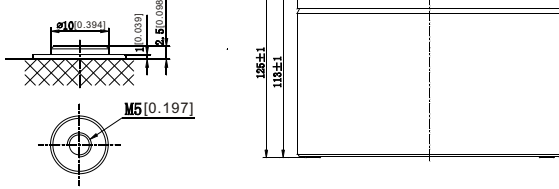
### Constant Power Discharge (Watts) at 25 °C (77°F)

F.V/Time	10min	15min	20min	30min	45min	1h	2h	3h	4h	5h	6h	8h	10h	20h
1.85V/cell	52.8	44.5	40.2	32.5	25.3	21.2	13.3	10.1	8.34	7.16	6.21	4.97	4.23	2.33
1.80V/cell	61.4	51.3	45.5	36.0	27.6	23.0	14.2	10.7	8.82	7.49	6.48	5.17	4.48	2.38
1.75V/cell	69.8	57.0	50.2	38.7	29.5	24.3	14.9	11.2	9.10	7.72	6.66	5.31	4.66	2.42
1.70V/cell	77.8	62.4	53.8	41.1	30.9	25.4	15.5	11.5	9.33	7.91	6.84	5.42	4.74	2.45
1.67V/cell	82.2	65.1	56.2	42.6	32.0	25.8	15.9	11.8	9.53	8.05	6.94	5.49	4.79	2.48
1.60V/cell	88.1	68.9	59.3	44.7	33.5	26.1	16.3	12.1	9.80	8.24	7.08	5.58	4.86	2.50

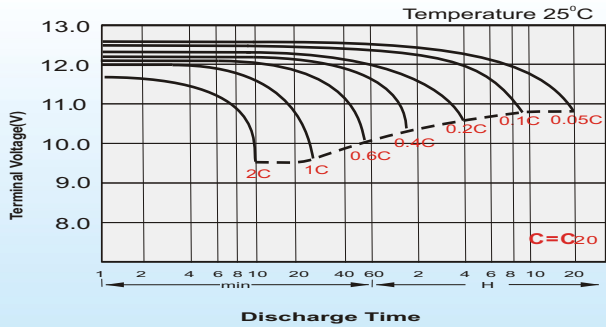
## Dimensions

### T12 Terminal

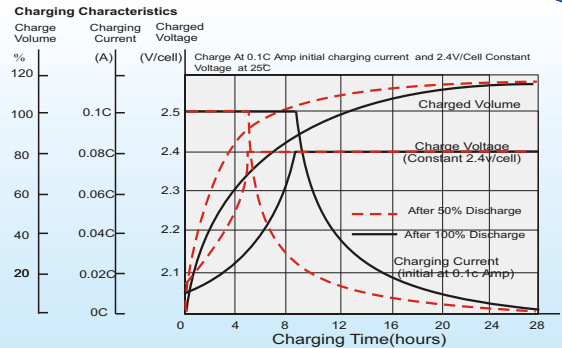
Unit: mm [inches]



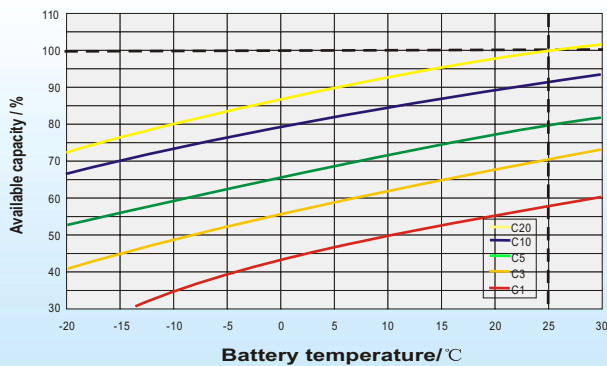
## Discharge Characteristics



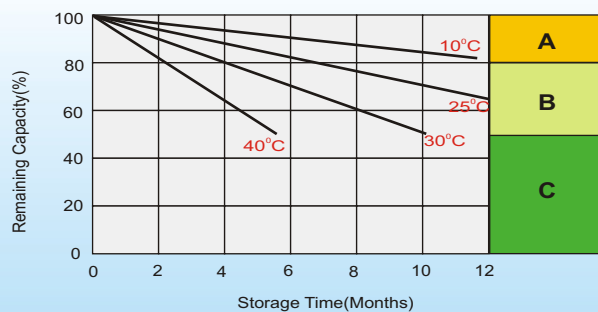
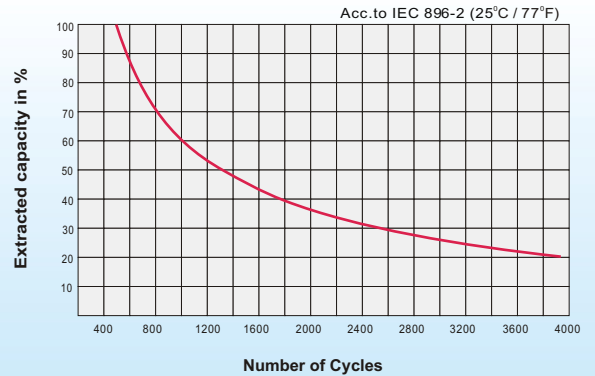
## Charging Characteristics (cycle use)



## Temperature Effects in Relation to Battery Capacity



## Cycle Life in Relation to Depth of Discharge



## Self Discharge Characteristics

- A** No supplementary charge required  
(Carry out supplementary charge before use if 100% capacity is required.)
- B** Supplementary charge required before use. Optional charging way as below:
  1. Charged for above 3 days at limited current 0.25CA and constant volatge 2.25V/cell.
  2. Charged for above 20hours at limited current 0.25CA and constant volatge 2.45V/cell.
  3. Charged for 8-10hours at limited current 0.05CA .
- C** Supplementary charge may often fail to recover the capacity.  
The battery should never be left standing till this is reached.

## Sales Office

### Sweden

Cell tech AB,  
Äggelundavägen 2, 175 1 2 Järfälla , Sweden  
TEL: +41 8 445 7870  
FAX: +41 8 445 7878  
E-mail: order@celltech.se  
www.celltech.se

### Finland and Baltic countries

Celltech oy  
Höyläämötie 11A, 00380 Helsinki, Finland  
TEL: +358 (0)207 9991 40  
FAX: +358 (0)207 9991 41  
E-mail: info@celltech.fi  
www.celltech.fi

### Denmark

Celltech A/S  
Lejrvej 25 , 3500 Vaerloese Denmark  
TEL: +45 7025 2201  
FAX: +45 7025 2202  
E-mail: info@celltech.dk  
www.celltech.dk