

Specification

Code:460-8615

Nominal Voltage	12V	
Watts(15min Rate)	126.3 Watte at 1.67V/cell	
Dimension	Length	197±2mm (7.76 inches)
	Width	165±2mm (6.50 inches)
	Container Height	170±2mm (6.69 inches)
	Total Height (with Terminal)	170±2mm (6.69 inches)
Approx Weight	Approx 13.2 kg (29.1lbs)	
Terminal	T6	
Container Material	ABS	
Rated Capacity	38.7 AH/3.87A	(10hr , 1.80V/cell,25°C/77°F)
	36.6 AH/4.58A	(8hr, 1.80V/cell,25°C/77°F)
	32.8 AH/6.56A	(5hr, 1.75V/cell,25°C/77°F)
	30.0 AH/9.99A	(3hr, 1.75V/cell,25°C/77°F)
	25.3 AH/25.3A	(1hr, 1.60V/cell,25°C/77°F)
Max. Discharge Current	456A (5s)	
Internal Resistance	Approx 10mΩ	
Operating Temp.Range	Discharge	-15~50°C (5~122°F)
	Charge	0~40°C (32~104°F)
	Storage	-15~40°C (5~104°F)
Nominal Operating Temp. Range	25±3°C (77±5°F)	
Cycle Use	Initial Charging Current less than 11.4A.Voltage	
	14.4V~15.0V at 25°C(77°F)Temp. Coefficient -30mV/°C	
Standby Use	No limit on Initial Charging Current Voltage	
	13.5V~13.8V at 25°C(77°F)Temp. Coefficient -20mV/°C	
Capacity affected by Temperature	40°C (104°F)	103%
	25°C (77°F)	100%
	0°C (32°F)	86%
Self Discharge	Leoch LPX series batteries may be stored for up to 6 months at 25°C(77°F) and then a freshening charge is required. For higher temperatures the time interval will be shorter.	



Applications

- ◆ UPS (High rate)
- ◆ High power backup supply
- ◆ Emergency power supply
- ◆ Starting system
- ◆ Power tools
- ◆ Emergency lighting
- ◆ Electric starting



Constant Current Discharge (Amperes) at 25 °C (77°F)

F.V/Time	5min	10min	15min	20min	30min	45min	1h	2h	3h	4h	5h	6h	8h	10h	20h
1.85V/cell	66.0	52.9	48.8	39.9	31.5	23.8	20.2	12.1	9.35	7.41	6.07	5.26	4.40	3.72	2.04
1.80V/cell	85.9	65.6	57.2	45.7	36.1	26.8	21.9	12.8	9.80	7.76	6.39	5.53	4.58	3.87	2.06
1.75V/cell	96.9	72.1	62.6	49.2	37.4	27.8	22.9	13.3	9.99	7.92	6.56	5.67	4.66	3.91	2.08
1.70V/cell	106.7	78.6	66.7	51.7	39.0	28.9	23.7	13.9	10.2	8.14	6.73	5.79	4.72	3.94	2.12
1.67V/cell	117.7	84.8	71.0	54.9	41.1	29.7	24.4	14.2	10.7	8.42	6.92	5.93	4.79	4.03	2.14
1.60V/cell	129.8	92.1	76.0	58.5	43.5	30.9	25.3	14.6	11.0	8.68	7.14	6.05	4.84	4.07	2.15

Constant Power Discharge (Watts/cell) at 25 °C (77°F)

F.V/Time	5min	10min	15min	20min	30min	45min	1h	2h	3h	4h	5h	6h	8h	10h	20h
1.85V/cell	120.6	97.7	91.1	75.1	60.0	45.6	38.8	23.5	18.3	14.6	12.1	10.5	8.61	7.36	4.05
1.80V/cell	155.5	119.7	105.3	85.0	67.8	51.1	42.0	24.7	19.0	15.2	12.7	11.1	8.93	7.63	4.09
1.75V/cell	171.6	129.4	113.7	90.5	69.7	52.6	43.7	25.5	19.3	15.5	13.0	11.3	9.07	7.70	4.12
1.70V/cell	183.7	137.8	119.7	94.4	72.3	54.4	45.0	26.5	19.8	15.9	13.3	11.5	9.19	7.77	4.20
1.67V/cell	199.7	147.4	126.3	99.5	75.6	55.3	46.2	27.1	20.6	16.4	13.6	11.7	9.30	7.92	4.24
1.60V/cell	215.1	156.5	132.8	104.9	79.2	57.3	47.5	27.8	21.1	16.9	14.0	11.9	9.38	7.99	4.26

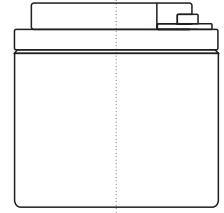
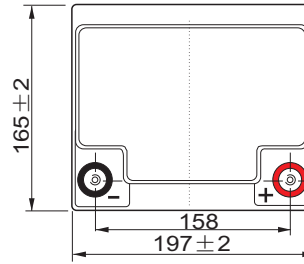
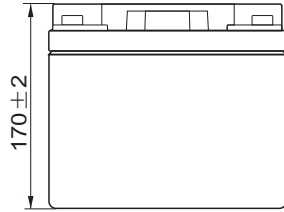
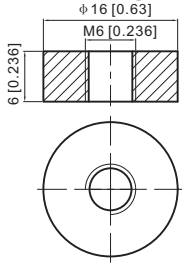
Specifications subject to change without notice.



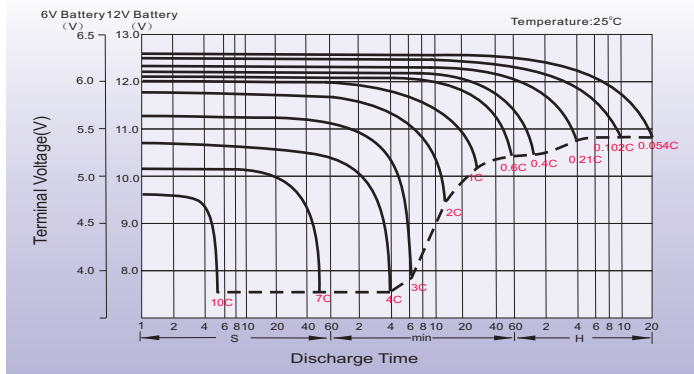
Dimensions

T6 Terminal

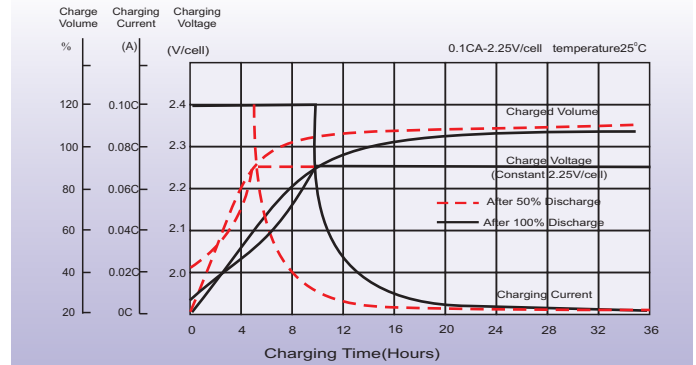
Unit: mm [inches]



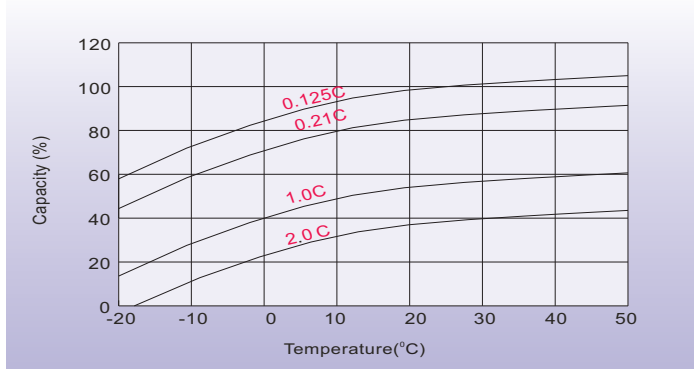
Discharge Characteristics



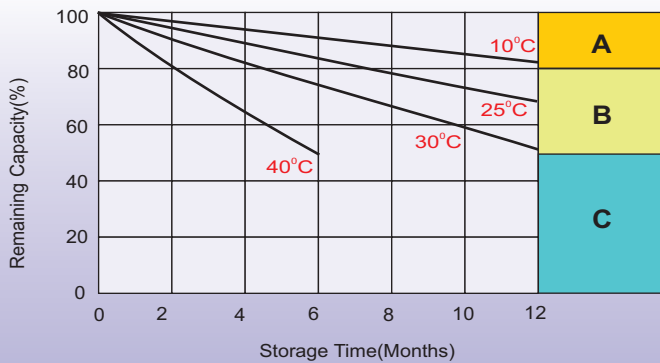
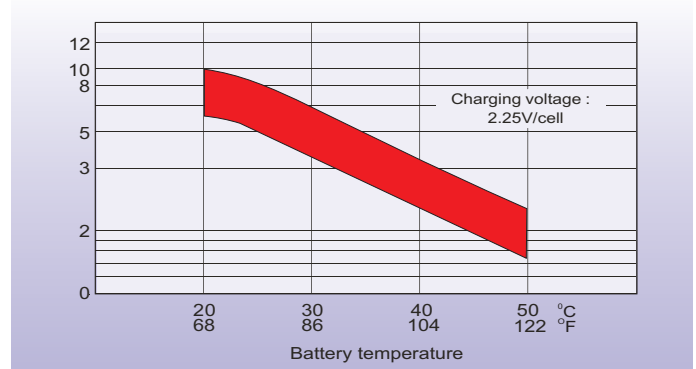
Float Charging Characteristics



Temperature Effects in Relation to Battery Capacity



Effect of Temperature on Long Term Float Life



Self Discharge Characteristics

- A** No supplementary charge required
(Carry out supplementary charge before use if 100% capacity is required.)
- B** Supplementary charge required before use. Optional charging way as below:
 1. Charged for above 3 days at limited current 0.25CA and constant volatge 2.25V/cell.
 2. Charged for above 20hours at limited current 0.25CA and constant volatge 2.45V/cell.
 3. Charged for 8-10hours at limited current 0.05CA .
- C** Supplementary charge may often fail to recover the capacity.
The battery should never be left standing till this is reached.

Sales Office

Finland and Baltic countries

Celltech Oy
Höyläämötie 11 A, 00380 Helsinki, Finland
TEL: +358 (0) 207 999 640
E-mail: info@celltech.fi
www.celltech.fi

Denmark

Celltech A/S
Lejrvej 25, 3500 Værløse, Denmark
TEL: +45 7025 2201
E-mail: info@celltech.dk
www.celltech.dk

Norway

Staubo Elektro-Maskin AS
Bjoernerudveien 12 C, 1266 Oslo, Norway
TEL: +47 22 75 35 00
E-Mail: post@staubo.no
www.staubo.no